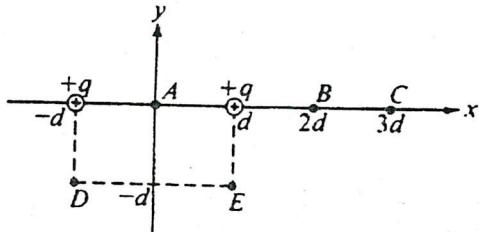


51. A charged particle is projected with its initial velocity parallel to a uniform magnetic field. The resulting path is a
- spiral
 - parabolic arc
 - circular arc
 - straight line parallel to the field
 - straight line perpendicular to the field

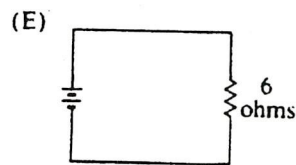
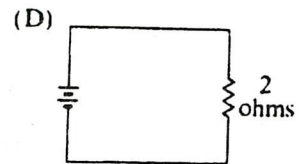
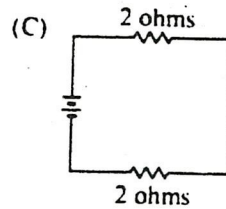
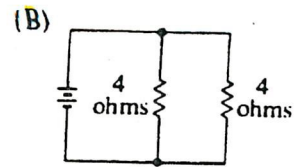
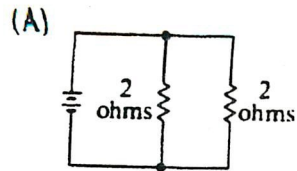
Questions 52-53



Two positive charges of magnitude q are each a distance d from the origin A of a coordinate system as shown above.

52. At which of the following points is the electric field least in magnitude?
 (A) A (B) B (C) C (D) D (E) E
53. At which of the following points is the electric potential greatest in magnitude?
 (A) A (B) B (C) C (D) D (E) E

Questions 54-56



The batteries in each of the circuits shown above are identical and the wires have negligible resistance.

54. In which circuit is the current furnished by the battery the greatest?
55. In which circuit is the equivalent resistance connected to the battery the greatest?
56. Which circuit dissipates the least power?